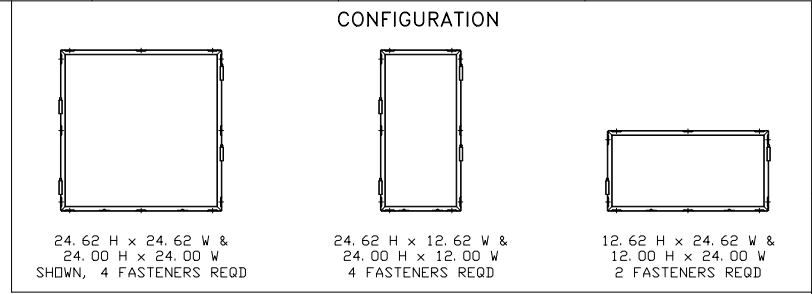
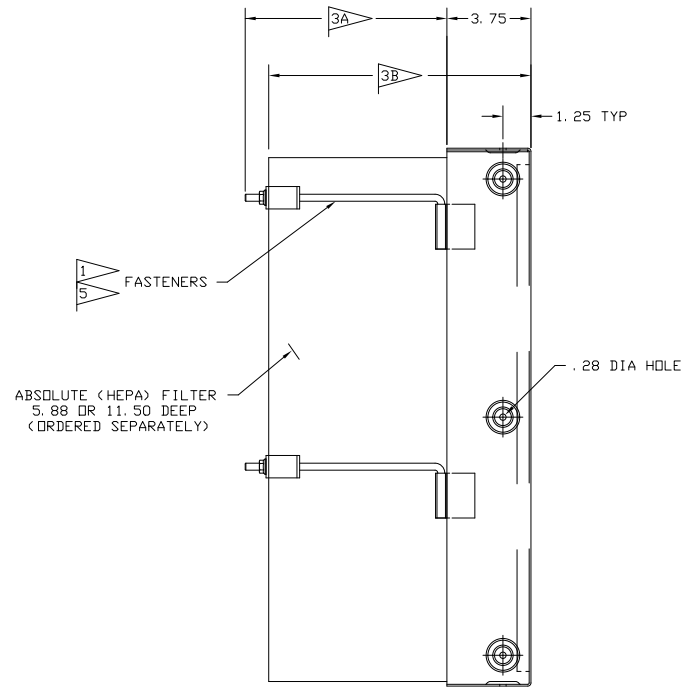
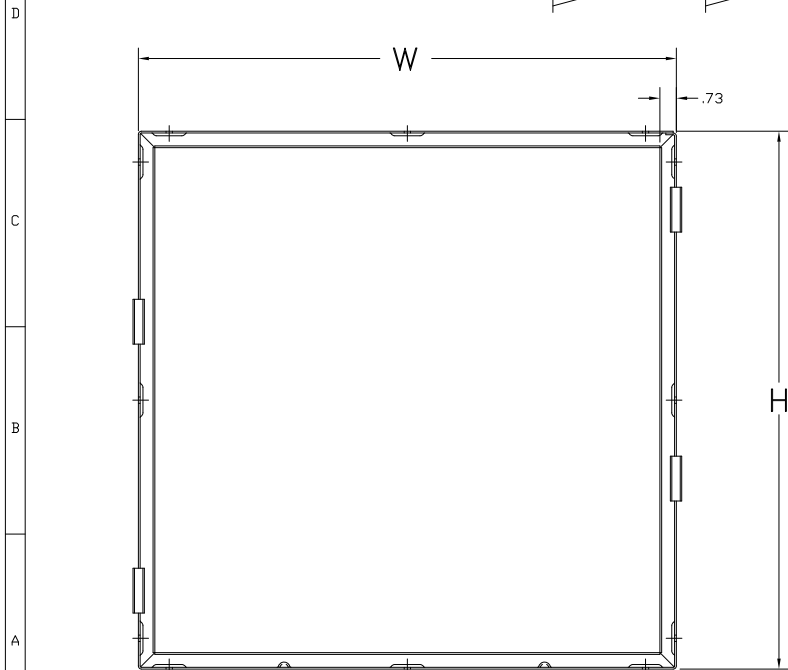


ABSOLUTE FILTER SIZE	H	W	MATERIAL	MAGNA-FRAME PART NO.	ORDERING REFERENCE			
					FASTENER 5.88 DEEP FILTER	NO. REQD	FASTENER 11.50 DEEP FILTER	NO. REQD
24	24	24.62	GALVANIZED STEEL 14 GA (.079)	125150 001				
24	12	24.62		125150 002				
12	24	12.62		125150 003	119669 001	001	119669 002	002
23-3/8	23-3/8	24.00		125150 004				
23-3/8	11-3/8	24.00		125150 005				
11-3/8	23-3/8	12.00		125150 006				
24	24	24.62	125150 011					
24	12	24.62	125150 012					
12	24	12.62	125150 013	119669 003	003	119669 004	004	
23-3/8	23-3/8	24.00	125150 014					
23-3/8	11-3/8	24.00	125150 015					
11-3/8	23-3/8	12.00	125150 016					
24	24	24.62	125150 021					
24	12	24.62	125150 022					
12	24	12.62	125150 023	119669 001	001	119669 002	002	
23-3/8	23-3/8	24.00	125150 024					
23-3/8	11-3/8	24.00	125150 025					
11-3/8	23-3/8	12.00	125150 026					



- NOTES:**
- FASTENERS (ORDERED SEPARATELY):
A. SEE TABULATION FOR ORDERING REFERENCE AND NUMBER REQUIRED PER FRAME. IF PRE-FILTER KIT IS REQUIRED OMIT FASTENERS.
B. REFER TO 124251 AND 401035 FOR PRE-FILTER KIT ORDERING REFERENCE.
 - FOR MULTI-BANK ARRANGEMENTS, SEE INSTALLATION INSTRUCTIONS 125152
 - LENGTHS:
A. FASTENER:
3.3 FOR 5.88 DEEP FILTERS AND 8.9 FOR 11.50 DEEP FILTERS
B. FRAME WITH FILTER:
6.0 FOR 5.88 DEEP FILTER AND 11.6 FOR 11.50 DEEP FILTER
 - FOR MAGNA FRAME II (GASKET SEAL) UNITS SEE DRAWING 119658.
 - TIGHTEN FASTENERS UNIFORMLY TO 30 INCH-POUNDS OF TORQUE.



E	1/21/03	REVISED PER SALES	14955-Y	AC	CM	CM
A	9/11/96	FIRST ISSUE	14863	JWC	CM	CM
REV.	DATE	DESCRIPTION	EWG	DFT	CK	APP



DESCRIPTION
MAGNA-FRAME III
GEL-SEAL ABSOLUTE FILTER

SHEET	DRAWING NUMBER:	REV.
1 OF 1	125149	E

MFG. DWG. 125150